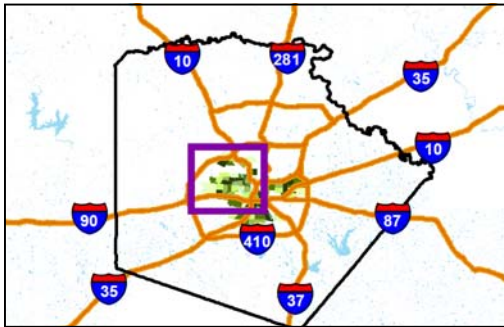


# TECCS in Action

## Case Study: San Antonio

### Texas



#### Early Development Instrument (EDI) Statistics

Year of EDI collection:	2011-2012
Number of Schools:	50
Number of Teachers:	203
Number of Children:	3,693

#### Communication of EDI Results

The United Way of San Antonio & Bexar County has used various methods including in person presentations, press releases, newsletters and the distribution of reports to reach out to a variety of individuals and organizations including, but not limited to, the following: AVANCE, Catholic Charities, Family Service Association, Any Baby Can, the Children's Shelter, the local PBS station, Brighton, Good Samaritan, P16 Plus Council, VOICES for Children, the Non-profit Council, the Children's Hospital of SA, the public library & Public Library Foundation, St. PJ's Children's Home, the mayor and his staff, the City Manager's staff, MetroHealth, Head Start, DHS, Valero, Bright Horizons, Zachry, Marriott Corporations, J.Crew, IBM, JPMorgan Chase, HEB, neighborhood associations, kindergarten teachers and school superin-

#### Community Use of the EDI Results

##### Increasing Community Awareness

United Way of San Antonio has partnered with the mayor and school districts on a press release. The press release highlighted the importance of early childhood education and helped put the city on the map for early education. The press release also came right before the major vote for Pre-K 4 SA and was a great way to increase the community awareness for early childhood education.

For annual Kids Day in the Park, all non-profit and school district booth participants were asked to provide a children's activity that focused on one of the five EDI domains. Over 75 booths participated and over 7,000 people throughout the community attended the event. To improve awareness of the EDI, United Way gave out information to all booth participants explaining the domains and the measurement itself.

#### Informing Strategic Planning & Decision Making

Through the EDI, United Way will be tracking the progress of the 3 Promise Neighborhood elementary schools within this footprint and using the area as a pilot site for planning and decision making. As United Way of San Antonio and Bexar County continues to collect data they can point to the EDI maps as a way to determine where necessary resources may be lacking and where successes are happening.

#### Supporting Funding Opportunities

The EDI work has prompted in-kind donations of computers from IBM, money to help pay teacher stipends from JP Morgan Chase, and funds to help pay for substitutes during trainings from the local P16 Plus Council. The leveraging of funds helps to keep everyone accountable and shows the investment that the private and public sectors are willing to put into early childhood education.

#### Federal Early Childhood Initiatives Being Leveraged

- Promise Neighborhoods

#### Funders

- IBM
- JP Morgan Chase
- Texas Early Learning Council
- P16 Plus Council
- The City of San Antonio

#### United Way of San Antonio & Bexar County

Kasi Cox

[kcox@unitedwaysatx.org](mailto:kcox@unitedwaysatx.org)

[www.nowdata.cinow.info/kinder-ready](http://www.nowdata.cinow.info/kinder-ready)

[www.unitedwaysatx.org/what-we-do/children-ready-to-learn](http://www.unitedwaysatx.org/what-we-do/children-ready-to-learn)

For more information about TECCS go to [www.TECCS.net](http://www.TECCS.net)